



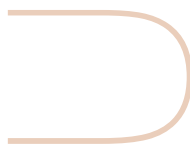
**PURE**  
*beauty & hair Co*

BEAUTY

FACE

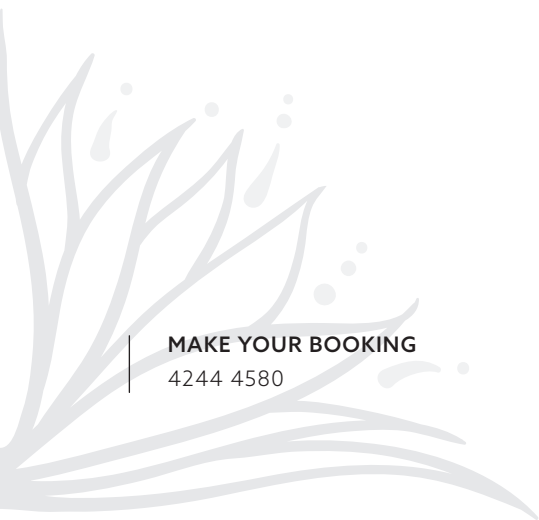
SKIN

HAIR



**MAKE YOUR BOOKING**

4244 4580



OUR  
Beauty  
Bar

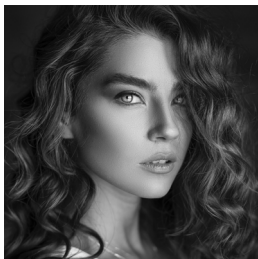
WAXING

**FACE WAXING**

	HER	HIM
EYEBROW SHAPING	25	25
MIDDLE BROW	5	5
LIP	10	-
CHIN	15	-
LIP & CHIN	25	-
EYEBROW & LIP	30	-
EYEBROW, LIP & CHIN	40	-
FULL FACE	50	-
NOSTRILS	10	15
EARS	15	20
SIDEBURNS/CHEEKS	20	20

**BODY WAXING**

	HER	HIM
SHOULDERS & NECK	30	From 40
UNDERARM	20	From 25
FULL CHEST & STOMACH	-	From 50
FULL BACK, SHOULDERS & NECK	50	From 60
1/2 ARM	20	From 30
BIKINI LINE/ SPEEDO LINE	25	From 30
G-STRING	30	From 40
BRAZILIAN	60	From 65
LOWER LEG	30	From 35
UPPER LEG	40	From 45
3/4 LEG	45	-
FULL LEG	55	From 65
FULL LEG & BIKINI	70	From 80
FULL LEG & G-STRING	80	From 90
FULL LEG & BRAZILIAN	110	From 120



## FACE

### LASH & BROWS

EYELASH TINT	25
EYEBROW TINT	20
EYELASH & EYEBROW TINT	40
EYEBROW TINT & BROW SHAPE	40
EYELASH TINT & BROW SHAPE	40
LASH TINT, BROW TINT & SHAPE	50
EYELASH LIFT	80
EYELASH LIFT & TINT	90
HENNA BROW TINT	55
HENNA BROW TINT & SHAPE	75
EYELASH EXTENSIONS	<b>Classic:</b> 120   <b>3D:</b> 130   <b>5D:</b> 150
INFILLS	55
REMOVAL & REPLACEMENT	150
REMOVAL ONLY	50

## MAKE UP

SPECIAL OCCASION MAKEUP	85
STUDENT FORMAL MAKEUP	80
+ ADD LASHES	10

OUR

# Everyday Essentials

## MANICURE & PEDICURE

PURE MANICURE (POLISH)	40
FILE BUFF & POLISH	20
PURE PEDICURE (POLISH)	50
POLISH FEET OR HANDS	15

## BODY

### MASSAGE

FULL BODY	80
BACK	40
HOT STONE	90
+ INDIAN HEAD	20

SPRAY TAN	30
-----------	----



ACHIEVE

---

*Luxurious  
Skin*

RELAX AND LET OUR PROFESSIONAL SKIN EXPERTS MAKE A DIFFERENCE TO YOUR SKIN WITH INNOVATIVE FORMULAS, TECHNIQUES AND THOUGHTFUL CARE.

SKIN PEEL TREATMENTS

Skin Peel Treatments are an excellent way to help turn back time, deeply exfoliating, hydrating, plumping, brightening and strengthening the skin. Achieve your skin's optimum health with a course of 3-6 peel treatments for best results.

MANDELIC PEEL TREATMENT

120

Most skin types & conditions

This peel is generally suited for oily, congested and problematic skin, assisting to mop excess oil, cleanse and even skin tone. This treatment includes cleanse, light exfoliation, corrective serum and peel, massage of the décolletage, SPF moisturiser and finishing with Ultra hydrating skin mist.

LATIC PEEL TREATMENT 30-50%

120

Most skin types & conditions

Targeting early signs of ageing including fine lines, wrinkles, pigmentation and uneven skin tone. Designed to increase hydration and provide firmer looking skin. Includes cleanse, light exfoliation, corrective serum and peel, massage of the décolletage, SPF moisturiser and finishing with Ultra hydrating skin mist.

INTENSE BRIGHTENING PEEL TREATMENT

130

Most skin types & conditions

Concerns with dull skin tone and lack of radiance and glow, this powerful blend of brightening agents will help restore clarity and luminosity, brightening and evening out skin texture. This treatment includes cleanse, exfoliation, corrective serums and peel, massage of the décolletage, brightening moisturiser cream and finishing with Ultra hydrating skin mist.

## A-ZYME PEEL TREATMENT

Most skin types & conditions

The Powerhouse for anti-ageing.

Targeting most skin concerns with signs of premature ageing and uneven, dull skin, this powerful peel will provide overall skin rejuvenation, plumping, firming and hydrating the skin whilst dramatically refining the surface texture.

This treatment includes a deep cleanse and exfoliation, corrective serums and peel, massage of the décolletage, even skintone and smoothing moisturiser and finishing with Ultra hydrating skin mist, leaving you glowing.

160

## FACIAL TREATMENTS

A Skin Health Consultation is included with every treatment.

Your bespoke 90 day treatment plan is created for you after a thorough Skin Health Consultation. See the list of add ons which can be incorporated into any facial treatment.

### SIGNATURE EXPRESS SPA FACIAL

For all skin types & conditions

A great pick me up for people on the go, this facial will leave your skin feeling fresh, smooth & glowing.

Includes cleanse, exfoliation, steam & mask with relaxing massage throughout, finishing off with a spritz and post treatment skin care.

80

### MICRODERMABRASION FACIAL

Most skin types & conditions

This treatment gently exfoliates dead skin cells and impurities revealing younger, fresher looking skin.

Includes double cleanse, micro exfoliation, mask treatment, post treatment skincare whilst using our oil infused hot towels to relax the mind & body.

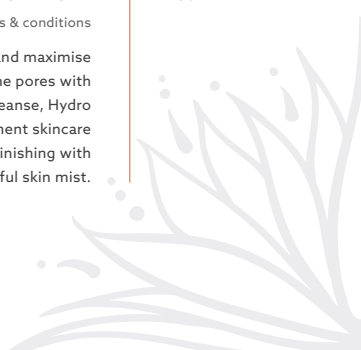
90

### HYDRODERMABRASION FACIAL

Most skin types & conditions

This Full facial gently exfoliates the skin and maximise the use of water whilst flushing out the pores with H2O and Aloe Vera. Includes double cleanse, Hydro exfoliation, mask treatment, post treatment skincare using oil infused hot towels finishing with a beautiful skin mist.

100



<p><b>OMNILUX FACIAL</b></p> <p>For all skin types &amp; conditions</p> <p>Omnilux LED light therapy offers remarkable results, a beautiful non-chemical treatment to control skin concerns and imperfections. Targeting ageing, acne scarring and breakouts whilst providing collagen and elastin production, plumps, hydrates and stimulates your cells. Includes a deep cleanse and exfoliation, steam, LED, massage, mask treatment and post treatment skin care using blended oil infused hot towels to relax the mind and body.</p>	150
<p><b>VITAMIN INFUSION FACIAL - SONOPHORESIS</b></p> <p>Suitable for normal, dry &amp; oily skin</p> <p>Designed to pack a punch with a deeper product penetration and extraction for congestion and impurities. A decongesting &amp; healing treatment highly recommended for correcting skin challenges such as blackheads, oily or congested skin with a tendency to breakout. Includes cleanse, exfoliation, necessary extraction of impurities, application of a healing mask, hydrating skin mist, purifying moisturiser + SPF. Provides a refreshing, hydrated glow and leaves the skin feeling fresh and rejuvenated.</p>	155
<p><b>PRESCRIPTION FACIAL</b></p> <p>Customised for your skin type and condition</p> <p>This luxurious facial is created exclusively for you, targeting your individual skin concerns and needs, ensuring maximum results through your skincare journey. You will receive a relaxing facial massage, neck and decollatage, double cleanse, exfoliation, power mask, eye treatment, corrective serum, hydrating skin mist, moisturiser and sun protection, using blended oil hot infused towels throughout. Float out feeling pampered and rejuvenated.</p>	150
<p><b>FACIAL ADD ONS</b></p> <p>Add one or more of these to take your facial treatment to the next level</p>	
<p>OMNILUX LIGHT THERAPY</p>	60
<p>MANDELIC PEEL</p>	50
<p>ULTRA LATIC PEEL 30-50%</p>	50
<p>ULTRA A-ZYME PEEL</p>	60
<p>EYE TREATMENT</p>	20



## WE PROUDLY STOCK

---

ULTRACEUTICALS SKINCARE  
UNITE NEUMA AND PRAVANA HAIR PRODUCTS  
PURE FIJI ORGANIC PRODUCTS  
YOUNGBLOOD MINERAL MAKEUP  
WOODWICK CANDLES  
PALM BEACH CANDLES

## OPENING HOURS

---

MONDAY	9AM - 5PM
TUESDAY	9AM - 5PM
WEDNESDAY	9AM - 5:30PM
THURSDAY	9AM - 7PM
FRIDAY	9AM - 5:30PM
SATURDAY	9AM - 4PM
SUNDAY	APPOINTMENT ONLY

## GET IN TOUCH

---

PH: 4244 4580  
purebeautyandhairco.com.au  
@purebeautyandhairco



## WHERE WE ARE

---

FIGTREE GROVE SHOPPING CENTRE | SHOP 45  
ACROSS FROM GLORIA JEAN'S COFFEE SHOP

A large, stylized white graphic of a plant with long, flowing leaves and small circular accents, positioned in the bottom right corner of the page.